



Report No. 77
Implementation of the Agreement on Movement and Access
and Update on Gaza Crossings
(15 - 28 October 08)

The United Nations is submitting the 77th bi-weekly report on the implementation of the 15 November 2005 Agreement on Movement and Access (AMA)¹, covering the period 15-28 October 2008 (Annex)². In light of the closure of Gaza, this report also monitors movement and access through other crossings not included in the AMA.

Summary:

AMA Benchmarks:

- **Rafah** crossing has remained closed for the movement of people for 507 working days. It was last open on 09 June 2007. However, the crossing was exceptionally and partially opened on eight days during the reporting period, allowing 272 humanitarian cases to cross into Gaza and 11 others to cross out.
- **Karni** crossing has been closed since 12 June 2007 for the movement of goods in and out of Gaza. The conveyor belt/chute for cereals, animal feed and gravel was open on five days (15,16,19,23 and 26 October) including 2 days in which the bulk cement lane was also open, compared to three days in the previous reporting period. A total of 693 truckloads of cereals, animal feed, gravel and bulk cement entered Gaza, via the two lanes, compared to 389 in the previous reporting period
- **Erez** crossing has remained closed for more than two years since March 2006 for workers, and more than a year, since 12 June 2007, for all other Palestinians, except for a limited number of Palestinian traders, aid workers and medical cases who have been granted special permits. For these persons, Erez crossing was partially open on 12 out of the 14 scheduled days. A daily average of 9 traders and 16 medical cases were allowed to cross.
- **Obstacles to movement in the West Bank** remains at 625 - the same number from the previous reporting period. Overall, the figure of 625 represents an increase of 249 obstacles (66.2%) over the baseline figure (376) of August 2005.
- *Convoys between the Gaza Strip and the West Bank:*
Truck convoys Implementation now 33 months overdue (since mid-January 2006).
Bus convoys Implementation now 34 months overdue (since mid-December 2005).
- *Ports:*
Seaport Awaiting GoI assurance of non-interference with the seaport operation.
Airport Awaiting commencement of discussions since November 2005.

Non-AMA Crossings:

- **Sufa** crossing was not opened during the whole reporting period. It was last opened on 12 Sept 08.
- **Kerem Shalom** crossing was open on 11 days compared to 8 days during the previous reporting period. A total of 689.5 truckloads including 85 for humanitarian aid agencies were allowed in.
- **Nahal Oz crossing** was open on 8 out of 12 scheduled days compared to 5 days during the previous reporting period. 240,070 liters of petrol (30,008 lit/open day), 2,117,240 liters of diesel (264,655 lit/open day), 1,762 tonnes of cooking gas (220 tonnes/open day) and 5,964,020 liters of industrial gas for the power plant (745,502 lit/open day) were allowed entry.
- **Of note:** Overall, 1,382.5 truckloads, including 85 truckloads from humanitarian agencies, were allowed entry to Gaza during this period, compared to 911 truckloads allowed in during the previous reporting period.

¹ The United Nations, through the OCHA oPt office, has assumed reporting responsibilities for reporting on the implementation of the AMA since April 2006.

² The AMA was negotiated by US Secretary of State Condoleezza Rice, between the Government of Israel and the Palestinian Authority to promote peaceful economic development and improve the humanitarian situation on the ground. It represents the commitments of both the Government of Israel and the Palestinian Authority to facilitate access and movement into/out and throughout the West Bank and Gaza Strip.

A. General update on Gaza Crossing Points

1.a. Goods - Gaza Strip	Rafah (AMA) ^a		Erez (AMA) ^b		Karni (AMA) ^c		Kerem Shalom ^d		Sufa ^e		Total
	Primary; Closed since 12/06/08										
	Actual	% of Scheduled	Actual	% of Scheduled	Actual	% of Scheduled	Actual	% of Scheduled	Actual	% of Scheduled	
Days open in period	3.0	12.0%	12.0	100.0%	0.0	0.0%	10.0	83.3%	0.0	0.0%	25.0
Number of days experiencing closure	11.0	78.6%	0.0	0.0%	14.0	0.0%	2.0	16.7%	12.0	0.0%	39.0
Working hours (daily ave.)	0.0	-	0.0	0.0%	0.0	0.0%	6.7	100.0%	0.0	0.0%	6.7
Total working hours in period	0.0	-	0.0	0.0%	0.0	0.0%	80.0	100.0%	0.0	0.0%	80.0
Number of trucks out (daily ave.)	0.0	-	0.0	-	0.0	0.0%	0.0	-	0.0	-	0.0
Number of trucks in (daily ave.)	0.0	-	0.0	-	57.8	-	57.5	-	0.0	-	115.2
Security incidents on Palestinian side of the crossing	0.0	-	0.0	-	0.0	-	0.0	-	0.0	-	0.0

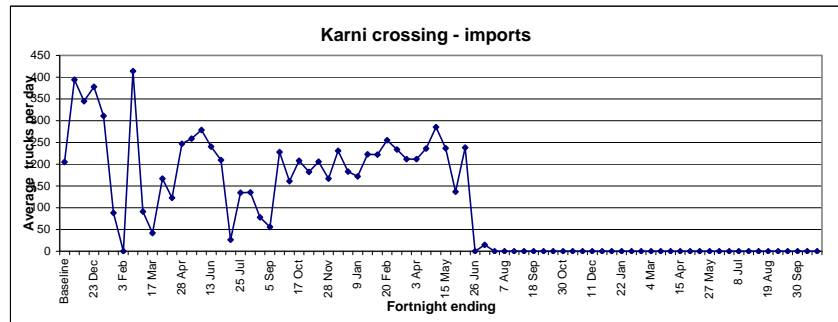
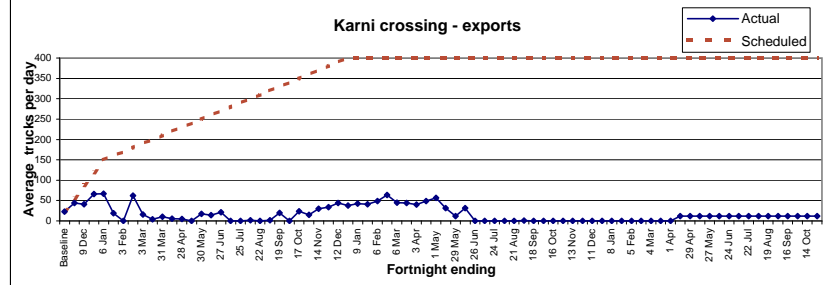
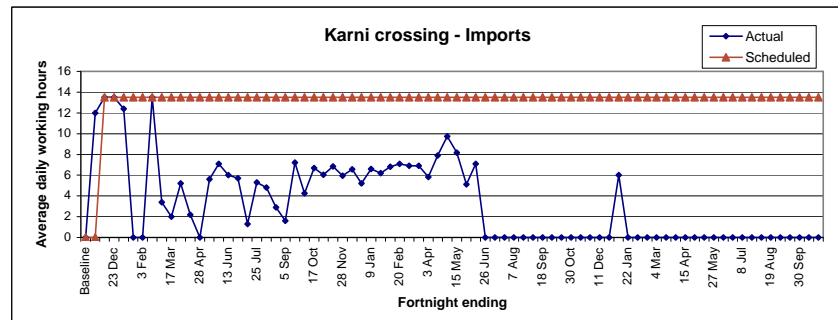
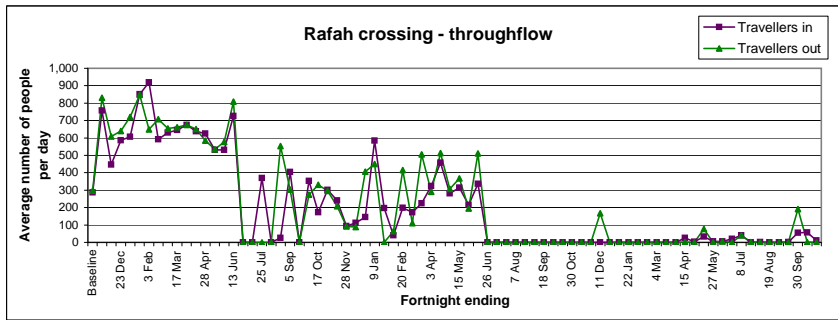
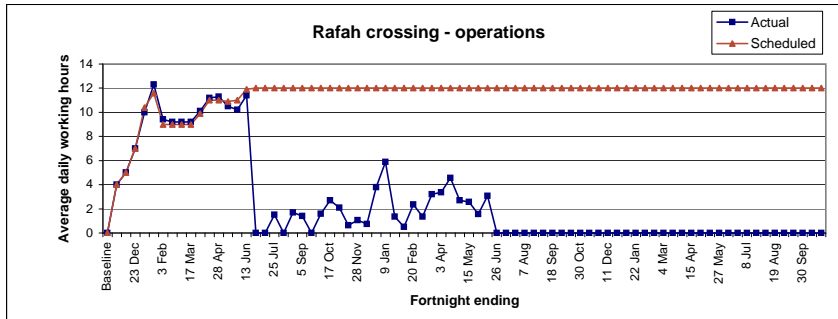
1.b. People - Gaza Strip	Rafah (AMA)		Erez (AMA)		Kerem Shalom		Total
	Primary; Closed since 09/06/08				Primary; Closed since 12/06/08		
	Actual	% of total	Actual	% of total	Actual	% of total	
Days open in period	3	27.3%	12	100.0%	-	-	15
Number of days experiencing closure	11	100.0%	0	0.0%	-	-	11
Total working hours in period	36	0.0%	-	-	-	-	36
Working hours (daily ave.)	2.5714	0.0%	-	-	-	-	2.5714
Travellers through crossing (daily ave.)	<i>In</i>	<i>Out</i>	<i>Traders</i>	<i>Workers</i>	-	-	
	11	0	9	0	-	-	

1.c. Fuel - Gaza Strip	Nahal Oz ^f	
	Actual	% of total
Days open in period	8.0	80.0%
Number of days experiencing closure	4.0	20.0%
Total working hours in period	-	-
Working hours (daily ave.)	-	-
Total number of litres in period	n.a	n.a
Number of litres (daily ave.)	n.a	n.a

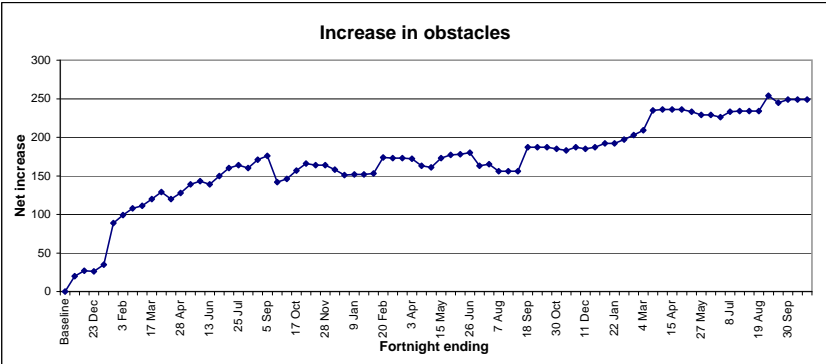
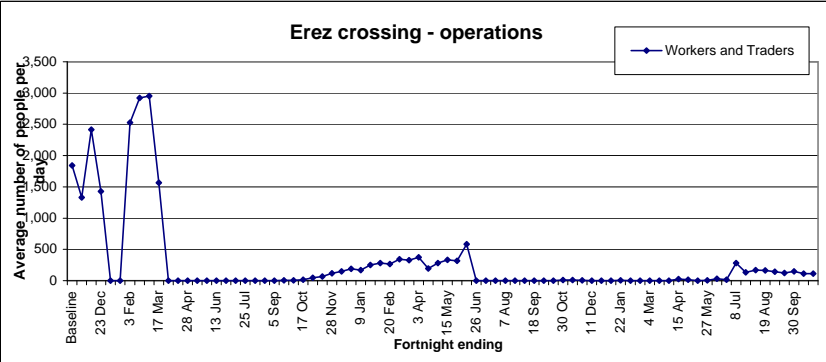
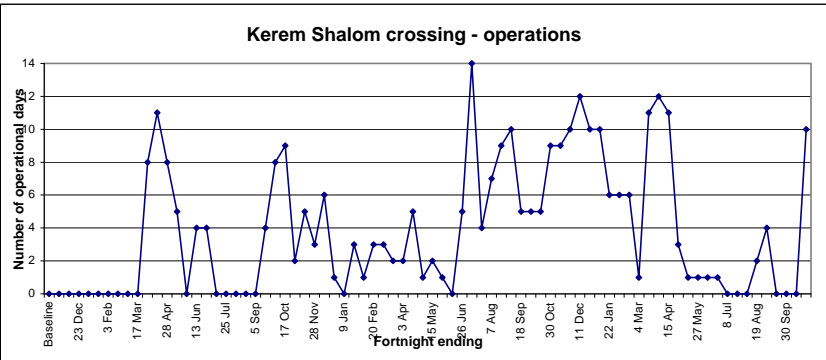
Background

- Rafah crossing is Gaza's international terminal for passengers. It is scheduled to open 7 days per week, from 08:00 to 20:00 hours. Rafah has been closed for public since 10 June 2007.
- Erez crossing, the primary crossing point for workers, traders and humanitarian personnel, remains closed for all Palestinians as well as for Palestinian workers since 12 March 2006. A limited number of critical Palestinian humanitarian cases and senior traders have been permitted to cross subject to prior coordination with the IDF. Erez crossing is scheduled to open for Palestinians between 06:00 and 22:00 hours, seven days per week. On 12 October 2007, Israel announced that the crossing will close every week from 15:00 on Fridays until 07:00 on Sundays (6 days per week).
- Karni, the principal commercial crossing, is scheduled to operate six days per week. Since its closure on 12 June 2007, a single-lane conveyor belt transferring grain C48:O49 animal feed operates on average two days per week. During the reporting period 693 truckloads of grain and animal feed were transferred to Gaza.
- Kerem Shalom has traditionally not had any scheduled operating days and was opened periodically for humanitarian goods only. However, since mid-June 2007, Kerem Shalom was opened by Israel to allow for the entry and occasional exit of humanitarian and commercial goods. Since 28 October 2007, Kerem Shalom is scheduled to open on 5 days per week from 08:00 until 16:00 hours.
- Sufa crossing, which was for aggregates and now is being used for basic commercial and humanitarian supplies, is scheduled to operate six days per week (closes on Saturdays), between 08:30 and 15:00 hours. However, it has been closed since 13 September 08 for unknown reasons.
- Nahal Oz, the crossing point for fuel, is scheduled to open 6 days per week, from 08:00 to 15:00 hours.

B. Trends Analysis of Gaza Crossings



Trends Analysis of Gaza Crossings - Continued



C. Update on the implementation of additional benchmarks of the AMA

1. Karni (scheduled hours: Sunday-Friday, 08:00-20:00) - CLOSED SINCE 12 JUNE 2007

	Actual	% of scheduled
Utilization ratio ^a	n.a	n.a
Number of Agricultural trucks out (daily ave.)	0	400
Number of Non-Agricultural trucks out (daily ave.)	0	0.0

a: Ratio of actual vs. planned working hours of scanners and cells.

2. General Management and Operations (West Bank and Gaza Strip)

2.a Management and Operations - Gaza Strip		YES/NO		
PA established clear operating procedures		YES		
Israel provided PA with population registry data		Incomplete		
Liaison office established		YES		
PA established baggage limits		YES		
PA provided the 3rd party the list of names of workers at Rafah		YES		
Security working group established		YES		
PA customs officials clearing incoming cargo at Kerem Shalom		NO		
Kerem Shalom operating procedures being discussed		NO		
New and additional scanner installed at Karni by 31 December 2005		NO		
Common management system adopted by both parties		Incomplete		
New generation of x-ray equipment installed and used		Incomplete		
Passages protected on the Palestinian side of the border		Incomplete		
Training program in place		Incomplete		
Security equipment installed		Incomplete		
PA established a unified system of border management		Incomplete		
Management system developed for Karni applied to Erez and Kerem Shalom		NO		
2.b Management and Operations - West Bank		Tarkumiya	Jalame	Sha'ar Ephraim
Israel put in place similar arrangements to make West Bank passages fully operational ^f		NO	NO	NO
Operational procedures developed for those passages		YES	YES	YES

a: New infrastructure has been put in place since the AMA was reached, however the current capacity (approximately 8 trucks/hour) does not meet AMA requirements for a capacity equivalent to Karni.

3. Gaza Strip Seaport (destroyed in 2001 by the IDF during construction)

	YES/NO
Gol assured donors that it will not interfere with operation of seaport / letter sent	NO
Tripartite committee to develop security and other arrangements for the port established	NO

4. Gaza Strip Airport (closed by Israel in Feb 2001 and destroyed in Dec 2001; renovated and vandalized in July 2007)

	YES/NO
Discussions continuing on security, construction and operations issues	NO

5. Link Between Gaza and the West Bank		
Convoys		YES/NO
Bus convoys established by December 15 2005		NO
Truck convoys established by January 15 2006		NO
Detailed implementation arrangements worked out		NO
<i>Buses (both directions - ave. in period)</i>	0	
Number of convoys per day	0	
Number of people per day	0	
<i>Trucks (both directions - ave. in period)</i>	0	
Number of convoys per day	0	
Number of trucks per day	0	

6. Movement Within the West Bank			
Obstacle reduction			YES/NO
Work ongoing to establish a plan to reduce obstacles			NO
Plan to reduce obstacles completed by 31 December 2005			NO
	Current count	Baseline (1 Aug 05) ^d	% increase over baseline
Number of identified obstacles ^c	625	376	66.2%
<i>of which manned</i>	93	59	57.6%
<i>of which unmanned</i>	532	317	67.8%
			-
Breakdown, by type of obstacle	Current count	Previous period count	Changes
<i>Checkpoints</i>	75	75	0
<i>Partial Checkpoints</i>	18	18	0
<i>Earthmounds</i>	224	224	0
<i>Road Gates</i>	98	98	0
<i>Roadblocks</i>	68	68	0
<i>Earthwalls</i>	46	46	0
<i>Trenches</i>	22	22	0
<i>Roadbarriers</i>	74	74	0

c: Since 15 September 2007, OCHA does not count checkpoints on the Green Line in the total closure number. The figures reported here are based on field observations updating a quarterly comprehensive field survey count.

d: This first figure was agreed upon by OCHA and the IDF in August 2005 and is used as the baseline for the AMA.